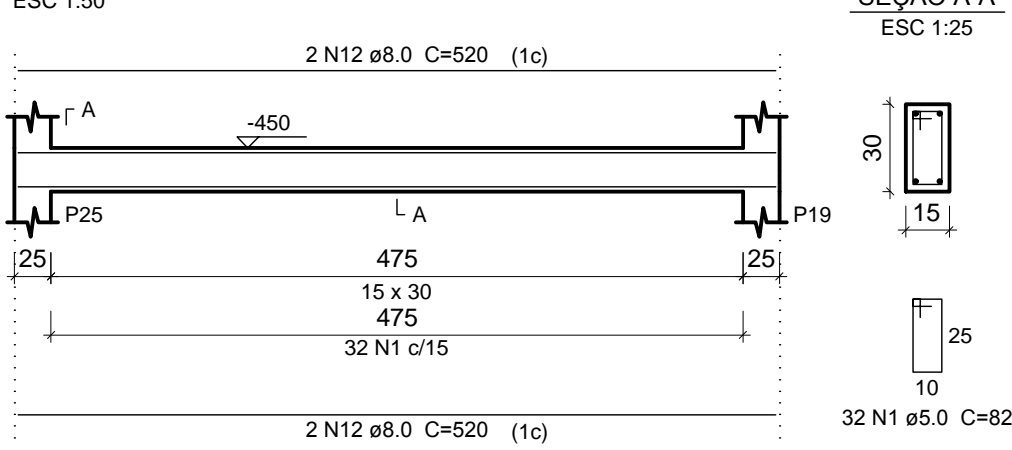
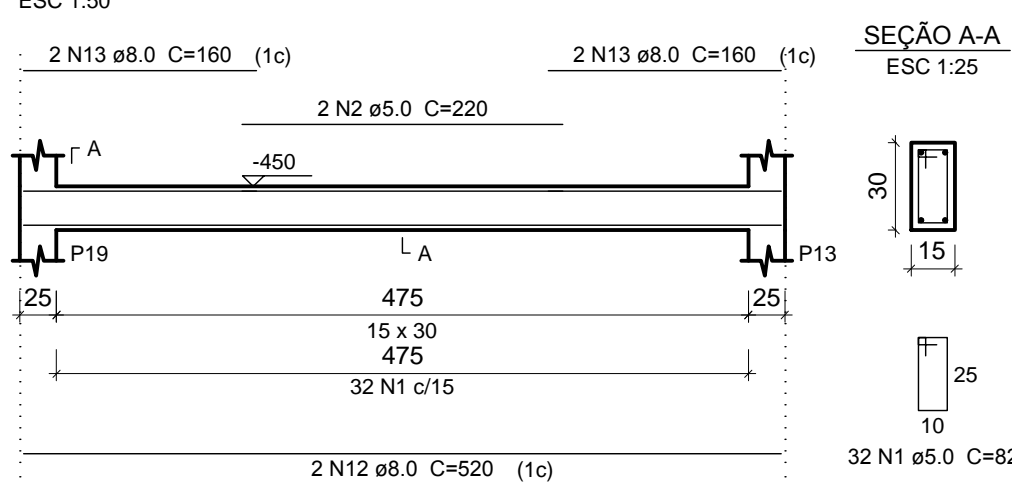


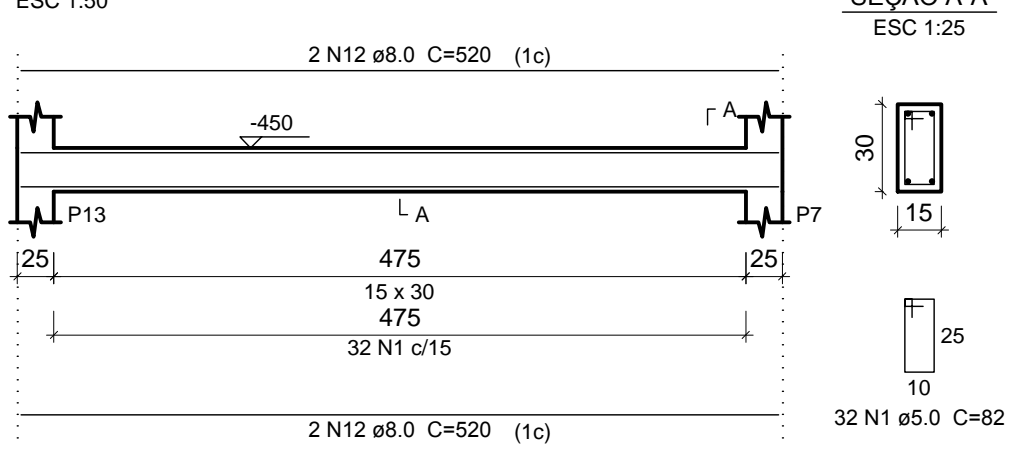
V18 (15 x 30)



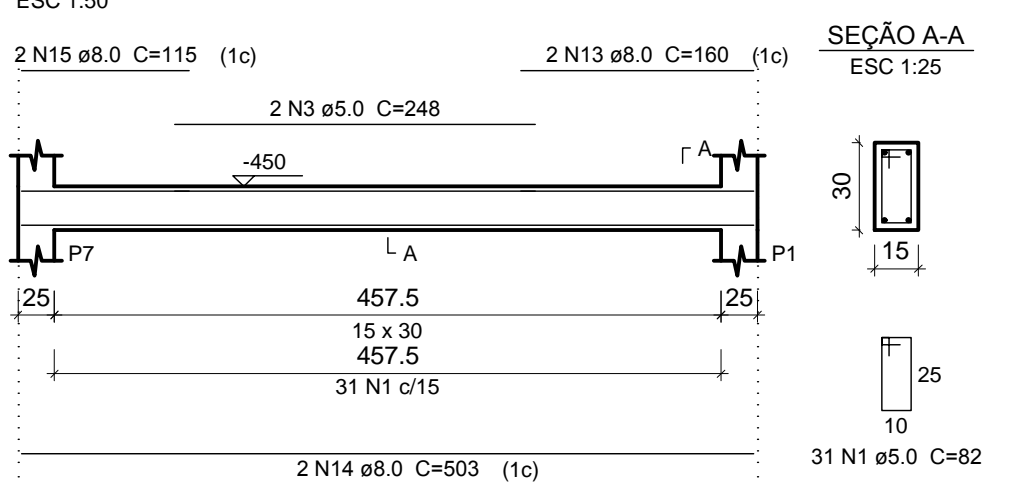
V19 (15 x 30)



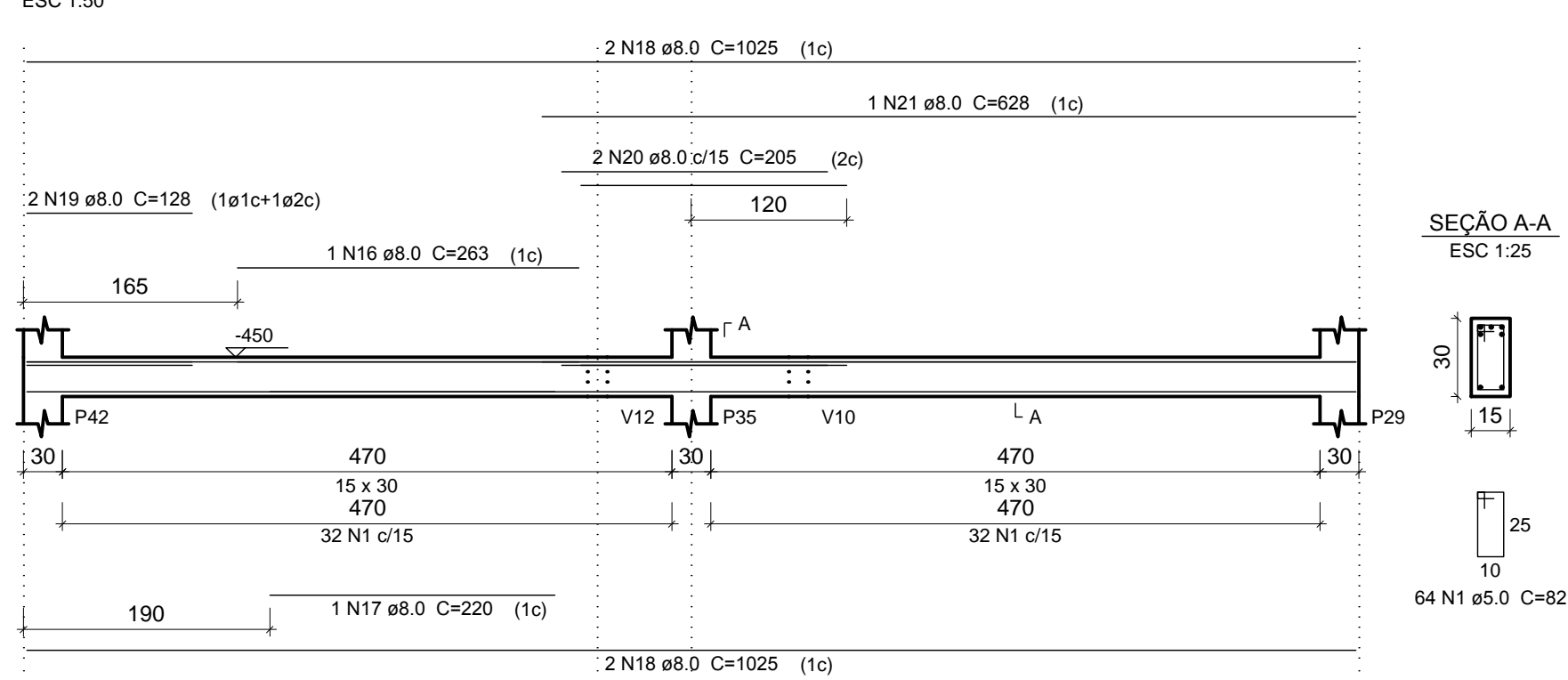
V20 (15 x 30)



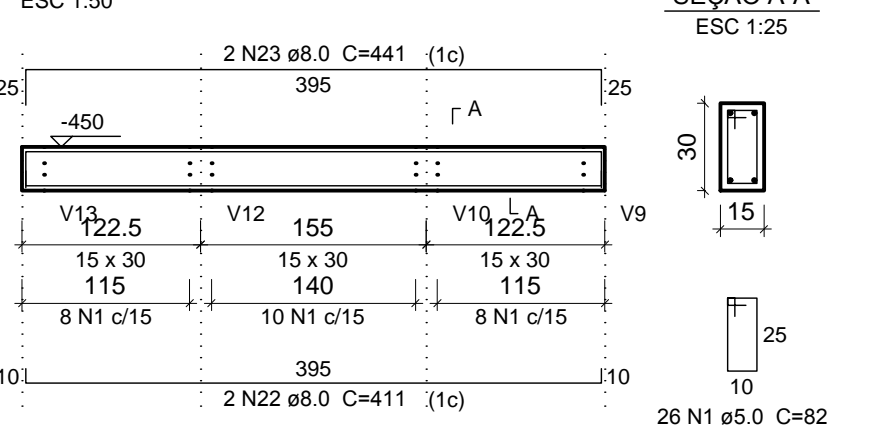
V21 (15 x 30)



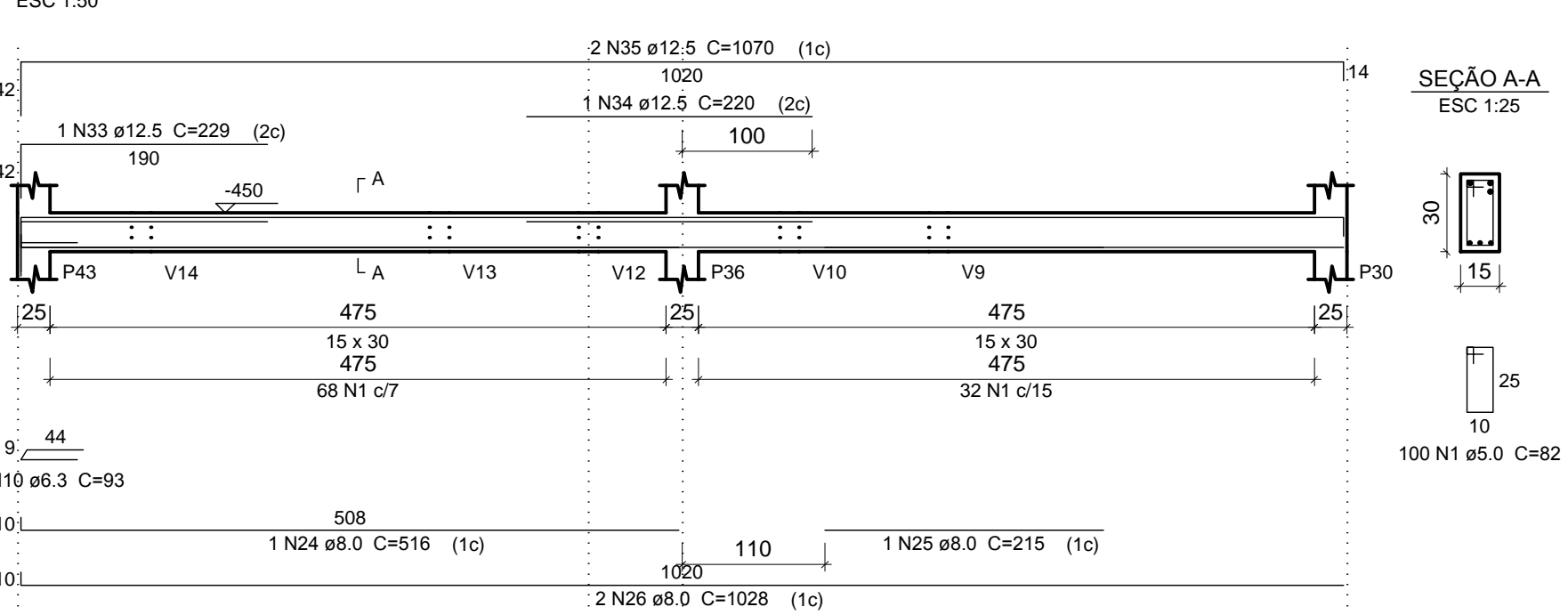
V22 (15 x 30)



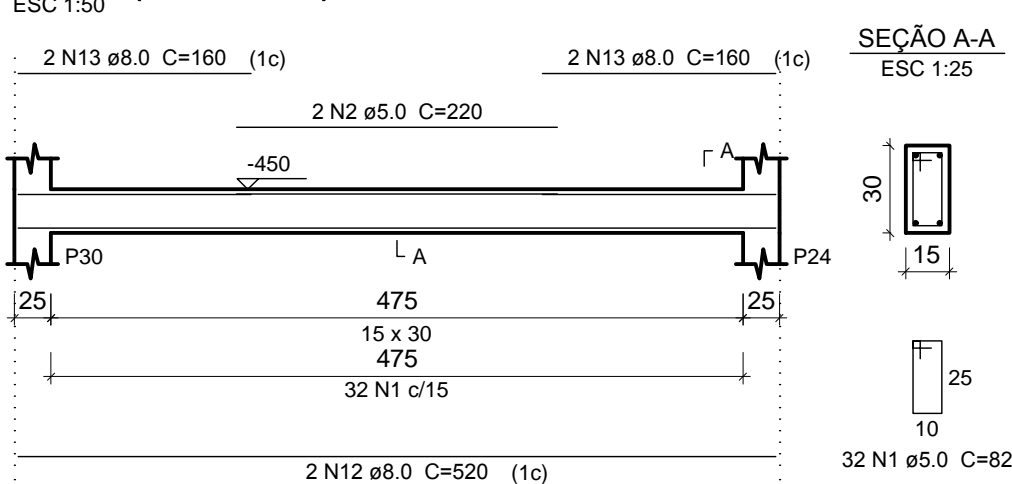
V23 (15 x 30)



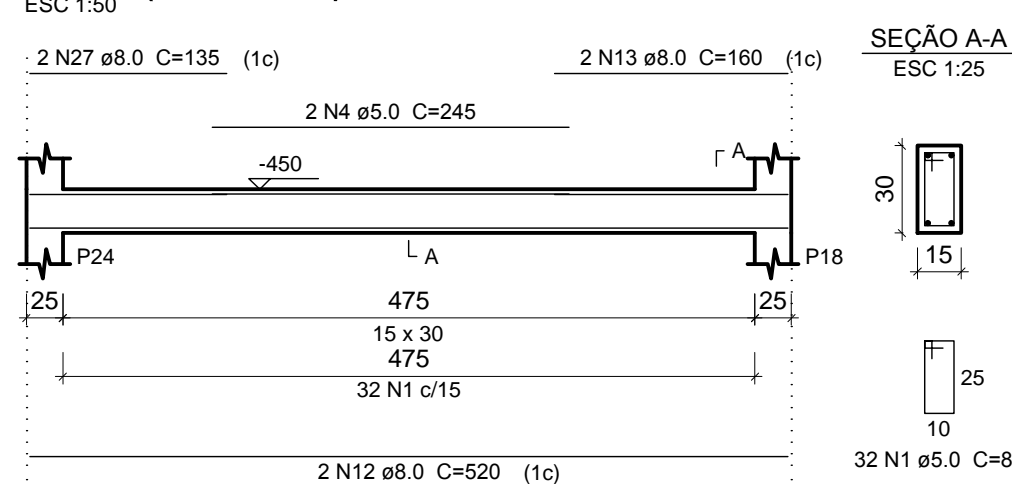
V24 (15 x 30)



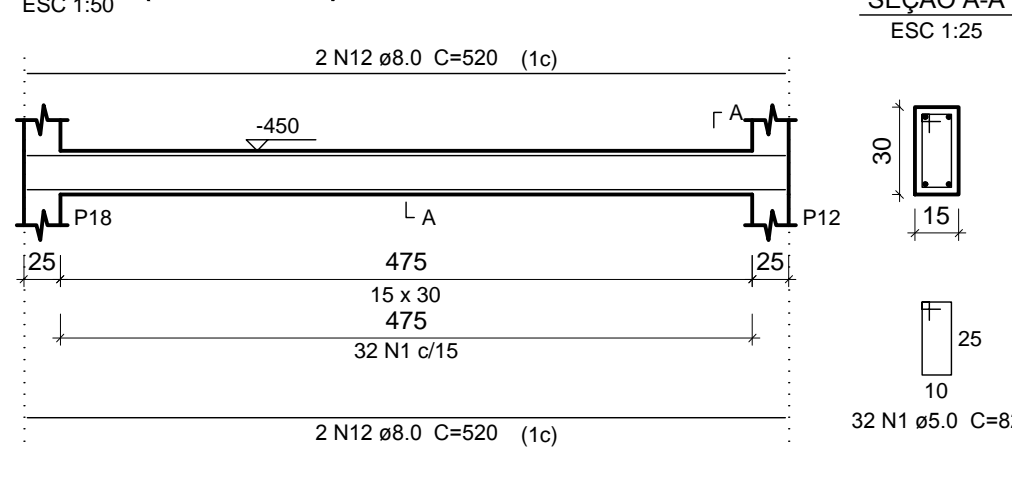
V25 (15 x 30)



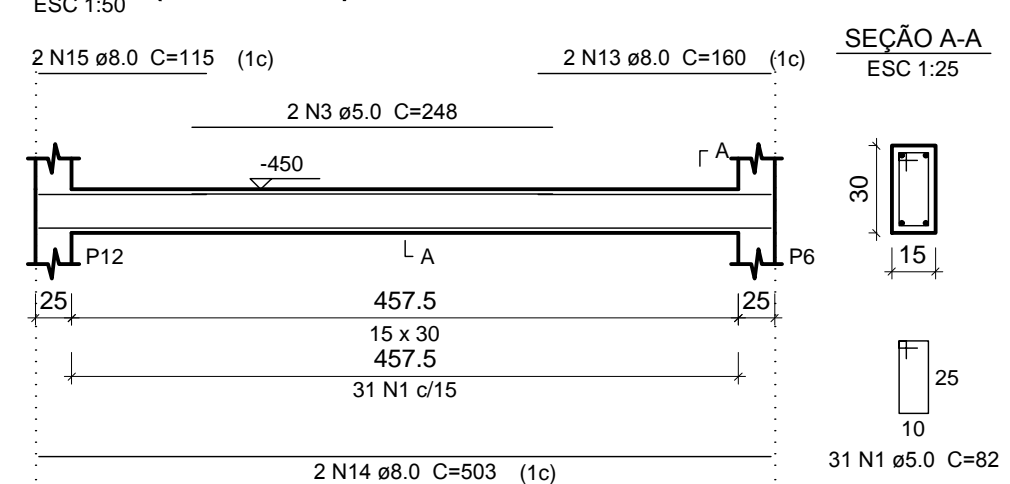
V26 (15 x 30)



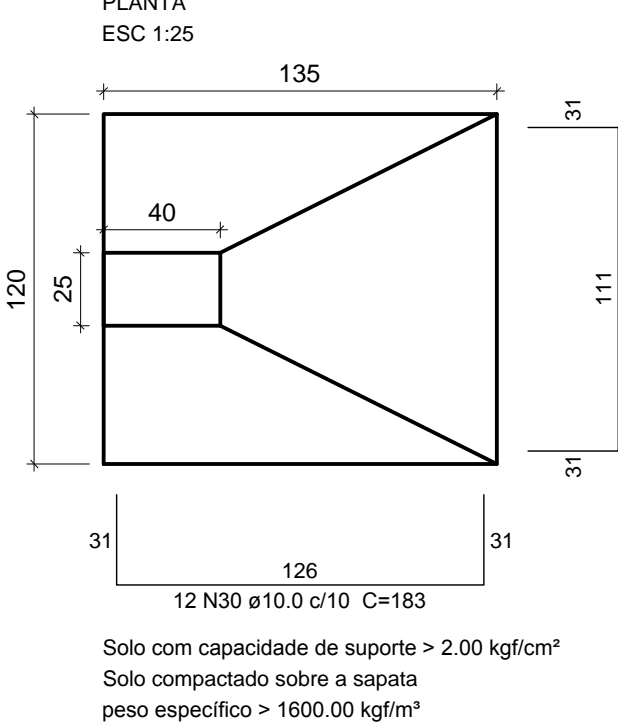
V27 (15 x 30)



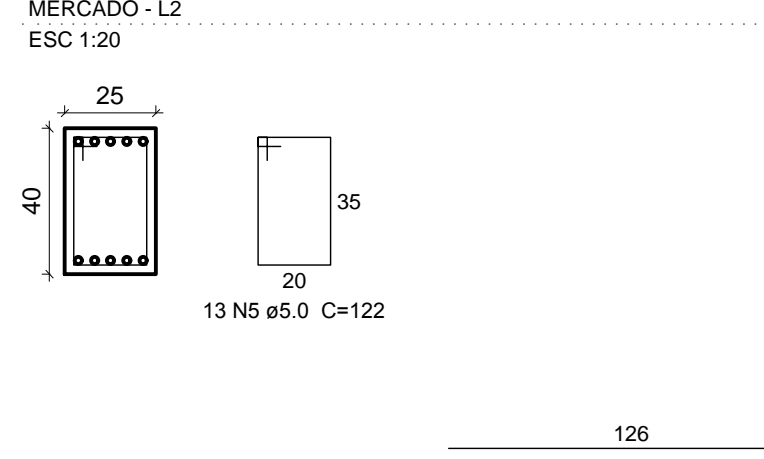
V28 (15 x 30)



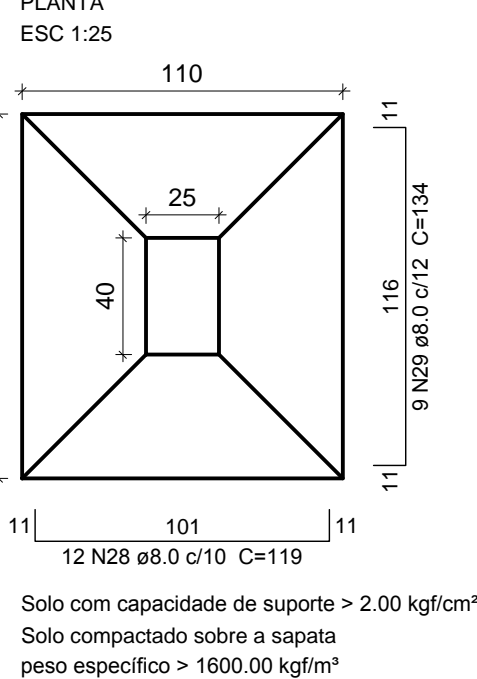
S44=S47



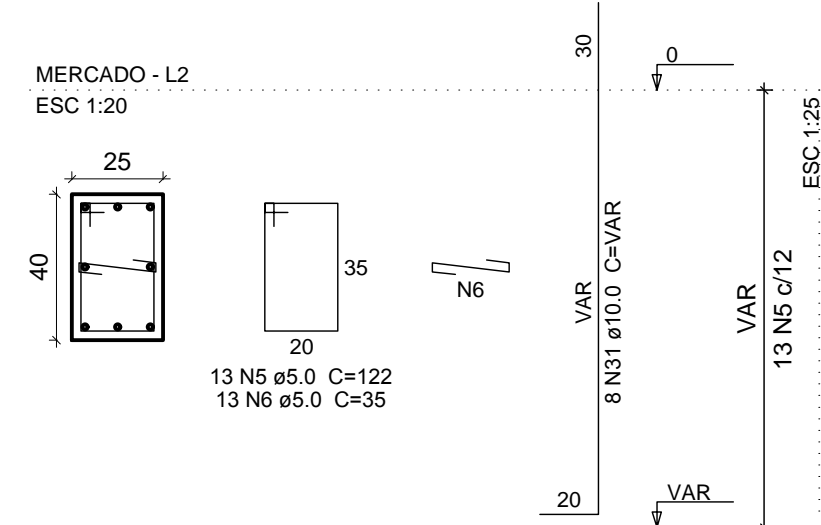
P44=P47



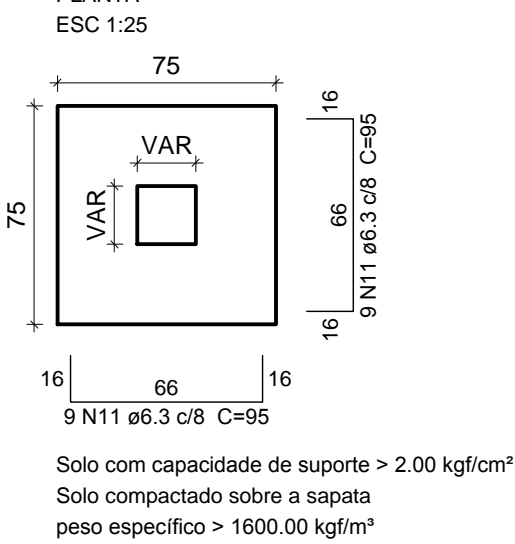
S45=S48=S50



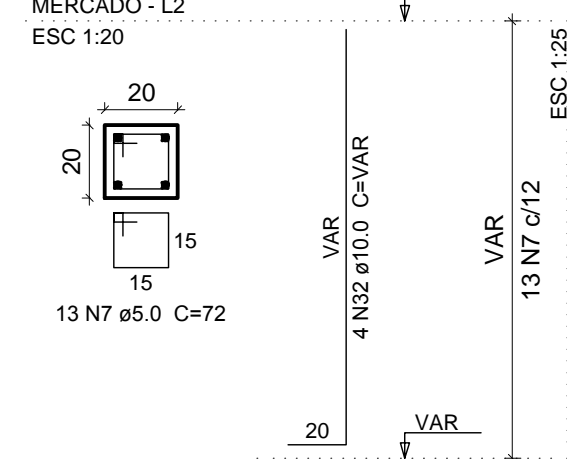
P45=P48=P50



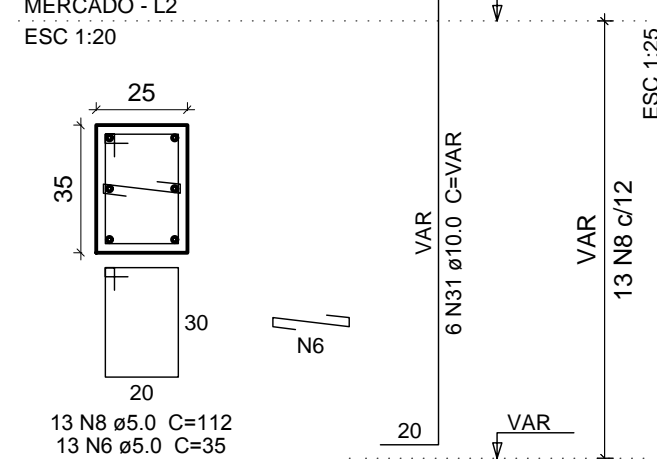
S46=S59=S60



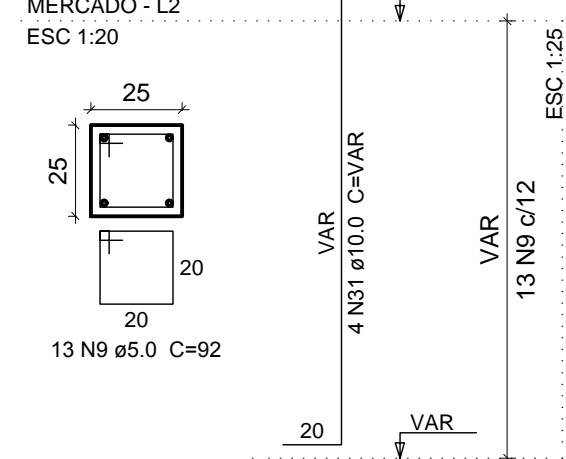
P46



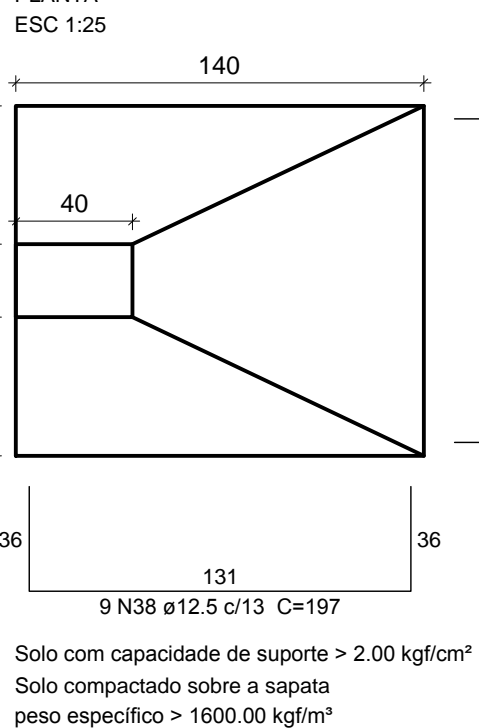
P59



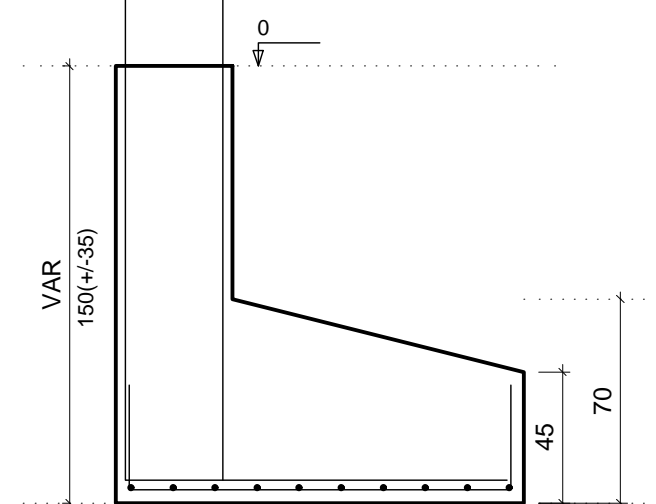
P60



S49



P59



Relação do aço

BALDRAME CARGA E DESCARGA E BANHEIROS:					
AÇO	N	DIAM (mm)	QUANT	C.UNIT (cm)	C.TOTAL (cm)
CA60	1	5.0	444	82	36408
	2	5.0	4	220	880
	3	5.0	4	248	992
	4	5.0	2	245	490
	5	5.0	65	122	7930
	6	5.0	52	35	1820
	7	5.0	13	72	936
	8	5.0	13	112	1456
	9	5.0	13	92	1196
	10	6.3	1	93	93
CA50	11	6.3	54	95	5130
	12	8.0	18	520	9360
	13	8.0	14	160	2240
	14	8.0	4	503	2012
	15	8.0	4	115	460
	16	8.0	1	263	263
	17	8.0	1	220	220
	18	8.0	4	1025	4100
	19	8.0	2	128	256
	20	8.0	2	205	410
	21	8.0	1	628	628
	22	8.0	2	411	822
	23	8.0	2	441	882
	24	8.0	1	516	516
	25	8.0	1	215	215
	26	8.0	2	1028	2056
	27	8.0	2	135	270
	28	8.0	36	119	4284
	29	8.0	27	134	3618
	30	10.0	24	183	4392
	31	10.0	34	VAR	VAR
	32	10.0	4	VAR	VAR
	33	12.5	1	229	229
	34	12.5	1	220	220
	35	12.5	2	1070	2140
	36	12.5	18	167	3006
	37	12.5	20	VAR	VAR
	38	12.5	9	197	1773
	39	12.5	10	177	1770

Resumo do aço

AÇO	DIAM (mm)	C.TOTAL (m)	PESO + 10 % (kg)
CA50	6.3	32.3	14.1
	8.0	326.2	141.5
	10.0	116.4	78.9
	12.5	152.8	161.9
PESO TOTAL (kg)			
CA50	396.4		
CA60	88.3		

Volume do concreto (C-30) = 2.98 m³
Volume do concreto (C-25) = 4.02 m³
Volume do concreto (C-35) = 1.03 m³
Área de forma = 76.29 m²

PREFEITURA MUNICIPAL DE SÃO JOÃO DO PARAÍSO/MG



OBRA/SERVIÇO:		MERCADO MUNICIPAL	
PROPRIETÁRIO: PREFEITURA MUNICIPAL DE SÃO JOÃO DO PARAÍSO/MG		CNPJ: 24.791.154/0001-07	
MÔNICA CRISTINE MENDES		PREFEITA MUNICIPAL	
ENDEREÇO:		PRAÇA DO MERCADO S/Nº - SEDE DO MUNICÍPIO - SÃO JOÃO DO PARAÍSO/MG	
PROJETO:		PROJETO ESTRUTURAL	
RESPONSÁVEL TÉCNICO:		MARCOS PAULO MADUREIRA LOPES	
ÁREAS:		RRT Nº:	
- ÁREA PAVIMENTO TERREJO: 1.200,00 M²		PROPOSTA Nº:	
- ÁREA SUB-SOLO (CONSTRUÍDA): 714,00 M²		ESCALA: INDICADA	
- ÁREA TOTAL EDIFICADA: 1.348,74 M²		DATA: MARÇO/2020	
- ÁREA TOTAL (INCLUSIVE PILOTIS) = 1.914,00 M²		FUNDADO: VIGAS BALDRAME CARGA E DESCARGA E BANHEIROS	